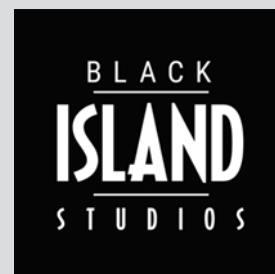


Stage 2

Stage 2 has a floor space of 543 Square metres and includes a paintable cove. The stage also includes drive-in access, a production office, a hair & make-up room with a wardrobe and an agency/green room.



SPECIFICATION

Dimensions - Height to Gantry (M)	7.6	Electrical Supply	400amps
Dimensions - Width (M)	27.4	Distribution	point 2 BAC 63 X 3 Phase 32 x single phase
Dimensions - Length (M)	19.8	Water Supply	Yes
Dimensions - Floor Area (SQM)	542.5	No. of Green/Dressing rooms(s)	3
Cove/Cyc	Cove	Heating/Cooling	Yes
Soundproof	No	Scissor Lifts	Yes
Floor Type	Concrete	Fork Lifts	Yes
Drive-in Access	Yes	Paint Cleaners	Yes
Drive-in Door Size (M)	4.2 x 2.8 (height x width)	Group Meeting spaces	Yes
Prelit greenscreen	No	Crew parking/public transport	Public Parking Available
Gantry/Red Rail Load Tolerance	1/4 tonne load each	24/7 opening?	Yes
Chain and Tackle	14 Chain & Tackle	Security?	Yes
On-stage cooking facilities	No	WiFi (Upload/Download)	Yes
On-site catering	Yes	Lighting	Via Panalux & Direct Digital London

Email: info@islandstudios.net

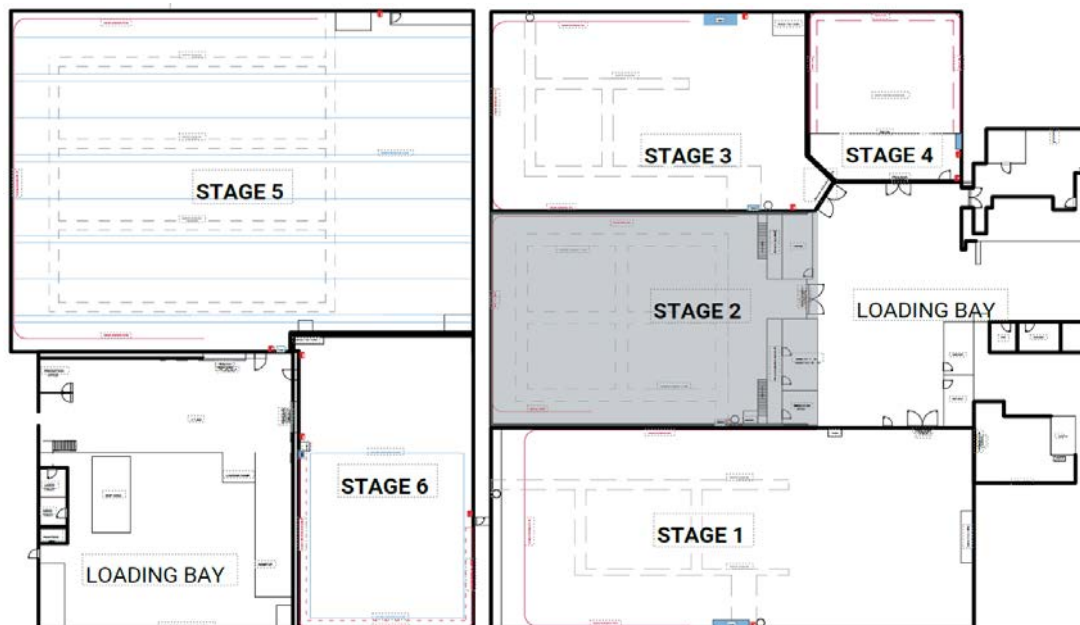
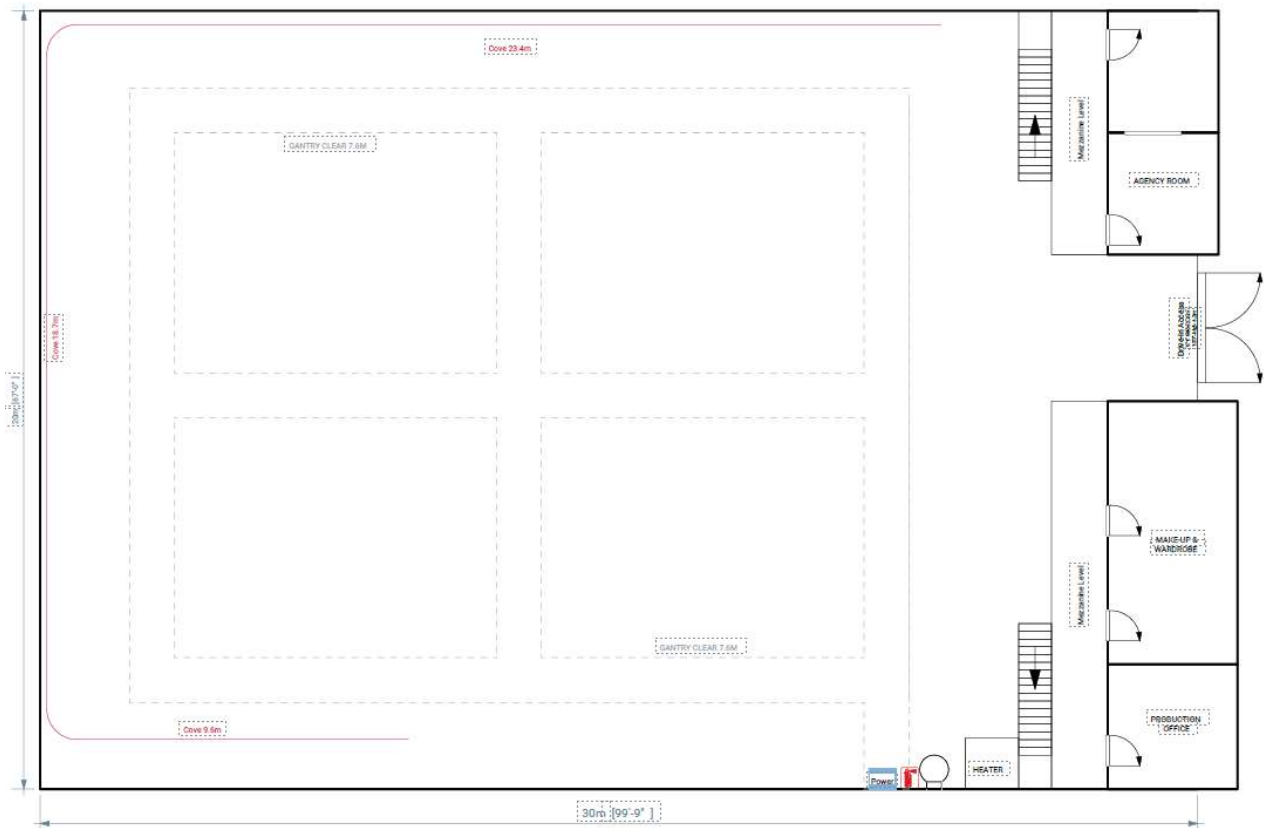
Tel: +44 (0)20 8956 5600

Address: Alliance Road, London, W3 0RA

Web: islandstudios.net

Stage 2

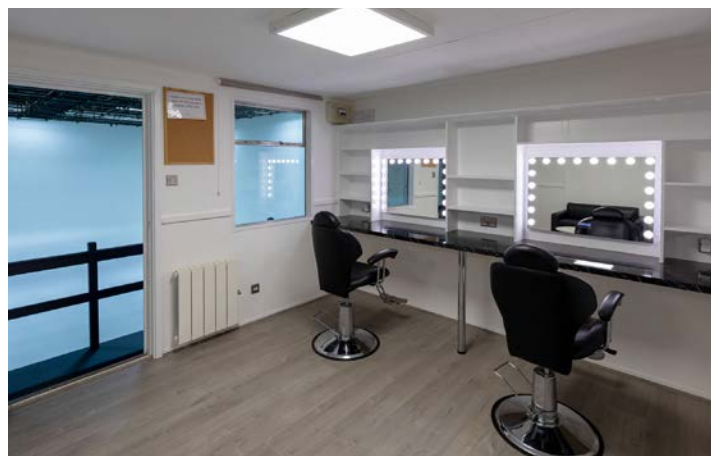
Stage 2 has a floor space of 543 Square metres and includes a paintable cove. The stage also includes drive-in access, a production office, a hair & make-up room with a wardrobe and an agency/green room.



Email: info@islandstudios.net
Tel: +44 (0)20 8956 5600
Address: Alliance Road, London, W3 0RA
Web: islandstudios.net

Stage 2

Stage 2 has a floor space of 543 Square metres and includes a paintable cove. The stage also includes drive-in access, a production office, a hair & make-up room with a wardrobe and an agency/green room.



Email: info@islandstudios.net
Tel: +44 (0)20 8956 5600
Address: Alliance Road, London, W3 0RA
Web: islandstudios.net