

# White Stage

Our soundproof White Stage at Dukes Island offers a total floor area of 417.2 sqm with drive-in access and a U-Shaped cove. The stage features numerous stage-level production and agency offices along with Hair & Makeup rooms.

DUKES  
ISLAND  
STUDIOS



## STAGE SPECIFICATION

Dimensions - Height to Gantry (M)	6.4	Electrical Supply	400A
Dimensions - Width (M)	24.4	Power Distribution	Power Lock / 6 x 16 amp S/phase 6 x 32 amp single phase 6 x 63 amp single phase
Dimensions - Length (M)	17.1	Production Office	Yes
Dimensions - Floor Area (SQM)	417.2	Hair/Make-up room	Yes
Cove	Soundproofed Cove	Dressing Room	Yes
Soundproof	Yes	Wardrobe Room	Yes
Floor Type	Concrete	Heating/Cooling	Yes
Drive-in Access	Yes	Scissor & Fork Lifts	Yes
Drive-in Door Size (M)	3.9 x 3.9 (height x width)	Crew parking/public transport	Yes
Pre-lit greenscreen	No	Security?	Yes
Weight Bearing	500kg	WiFi	Yes
Chain and Tackle	15	Lighting	Via Panalux & Direct Digital London
On-site catering	Yes	Still Photography	Via Direct Digital London

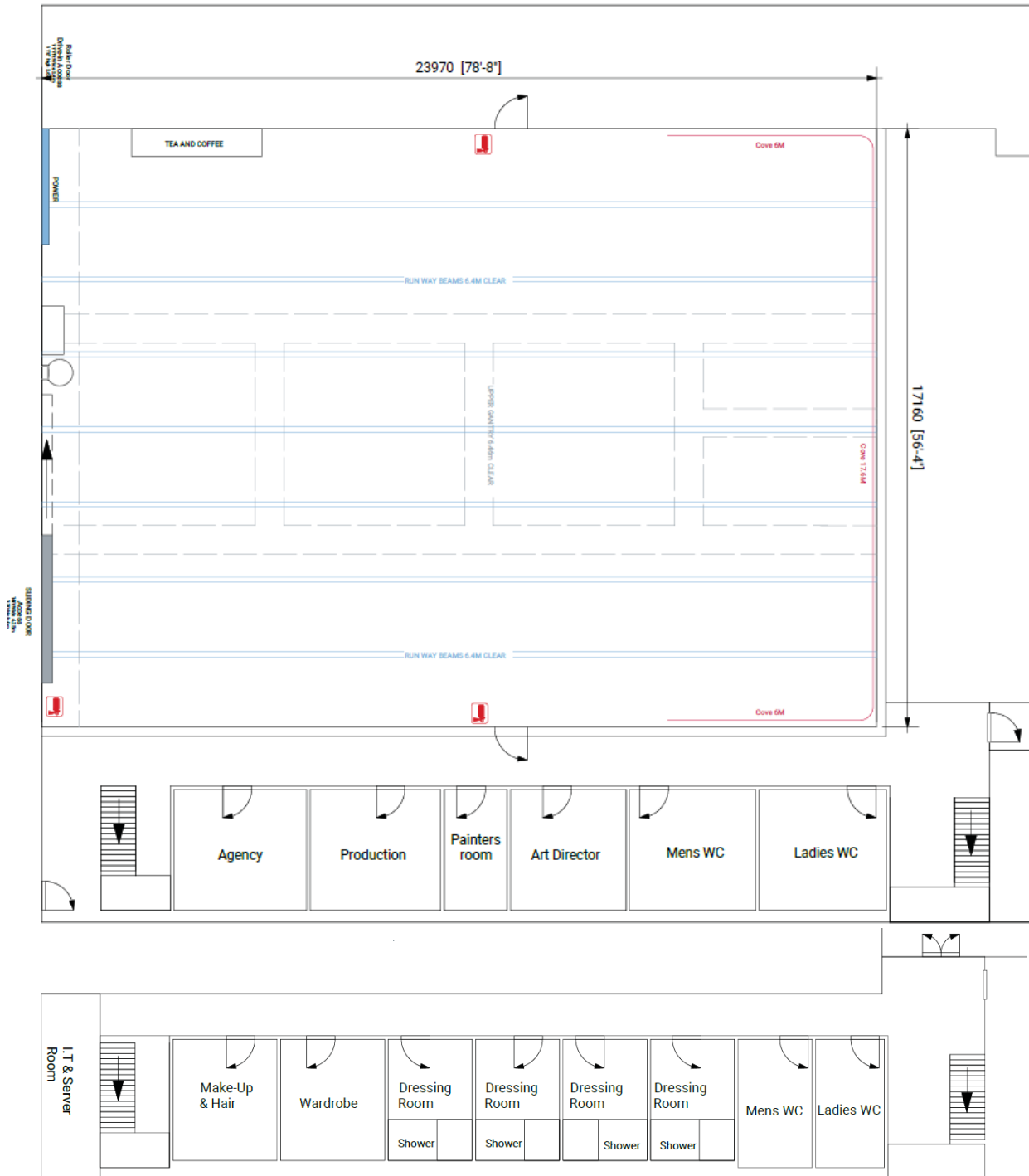
**Email:** [info@islandstudios.net](mailto:info@islandstudios.net)

**Tel:** +44 (0)20 8956 5600

**Address:** Dukes Road, Western Avenue, London, W3 0SL

**Web:** [islandstudios.net](http://islandstudios.net)

# White Stage



Full Downloads Available on the [Here](#)

Email: [info@islandstudios.net](mailto:info@islandstudios.net)

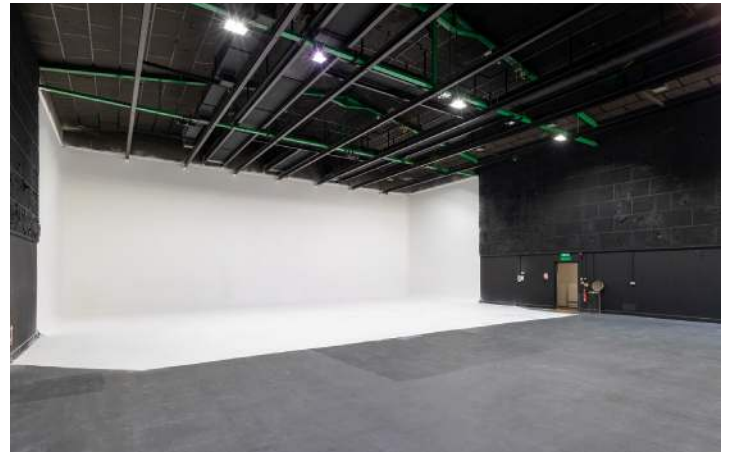
Tel: +44 (0)20 8956 5600

Address: Dukes Road, Western Avenue, London, W3 0SL

Web: [islandstudios.net](http://islandstudios.net)

# White Stage

Dedicated spaces for your production needs are available on White Stage where we have specially configured hair & makeup and shower rooms, as well as ample reserved production offices just off the stages to offer a comfortable environment to focus away from the action on set.



**Email:** [info@islandstudios.net](mailto:info@islandstudios.net)  
**Tel:** +44 (0)20 8956 5600  
**Address:** Dukes Road, Western Avenue, London, W3 0SL  
**Web:** [islandstudios.net](http://islandstudios.net)